

PICTORIAL GLOSSARY OF BISBEE MINING TERMS



BY

RICHARD W. GRAEME IV

THE INTENT OF THIS DOCUMENT IS TO PROVIDE A CLEARER UNDERSTANDING OF MANY OF THE MINING TERMS AND HELP IDENTIFY MINING EQUIPMENT USED IN BISBEE, ARIZONA. THE GREATEST CARE WAS TAKEN TO USE AS MANY AUTHENTIC EXAMPLES AS POSSIBLE. IF THE TERM IS FOLLOWED BY AN ASTERISK, THIS INDICATES THE IMAGE USED IS NOT OF AN ITEM THAT WAS SPECIFICALLY USED IN BISBEE. THE OBJECT AS CLOSE TO IDENTICAL TO EXAMPLES FROM BISBEE AS POSSIBLE, IF THEY ARE NOT IDENTICAL. THIS DOCUMENT IS DESIGNED TO BE USED IN CONJUNCTION WITH A GLOSSARY OF THE MINING AND MINING RELATED TERMS AS USED AT BISBEE, ARIZONA, WRITTEN BY RICHARD W. GRAEME III, DOUGLAS GRAEME AND MYSELF RICHARD W. GRAEME IV.

DECEMBER, 31 2010



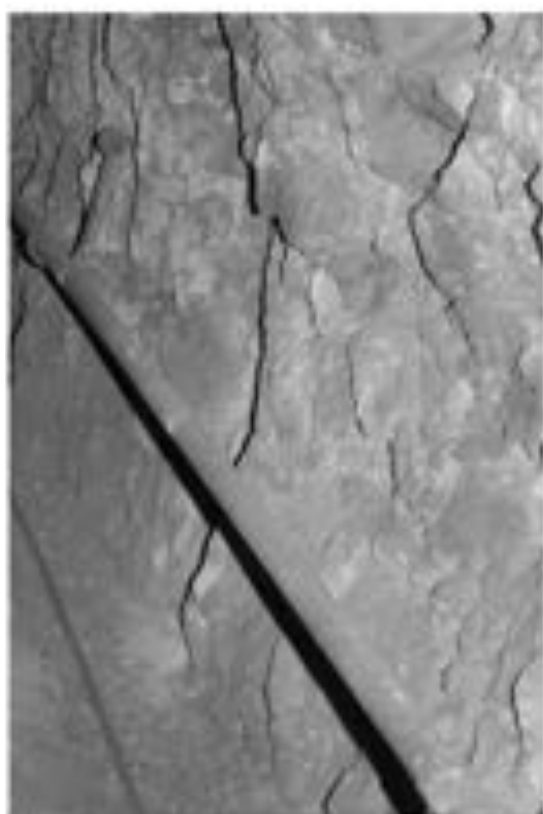
AERIAL TRAMWAY *



AIR DOOR



AIR HOSE



AIR LINE



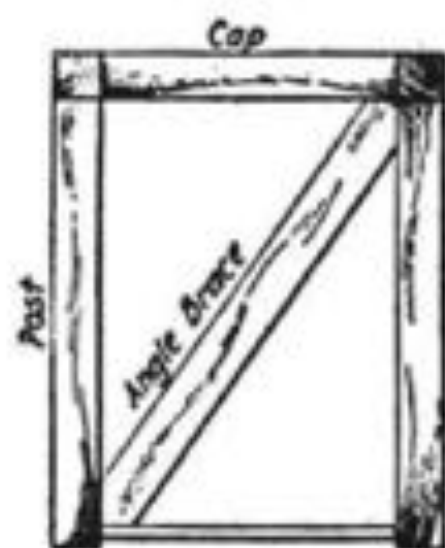
AIR RECEIVER



AMOGEL



ANFO LOADER



ANGLE BRACE



ANIMAL HAULAGE



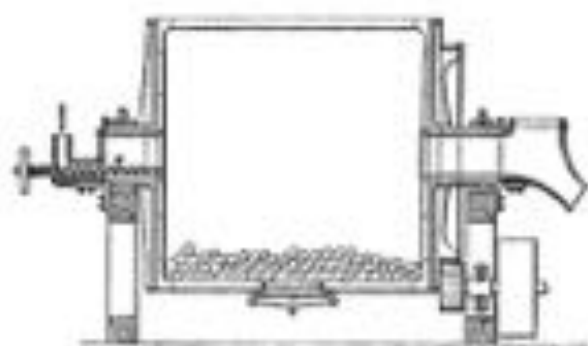
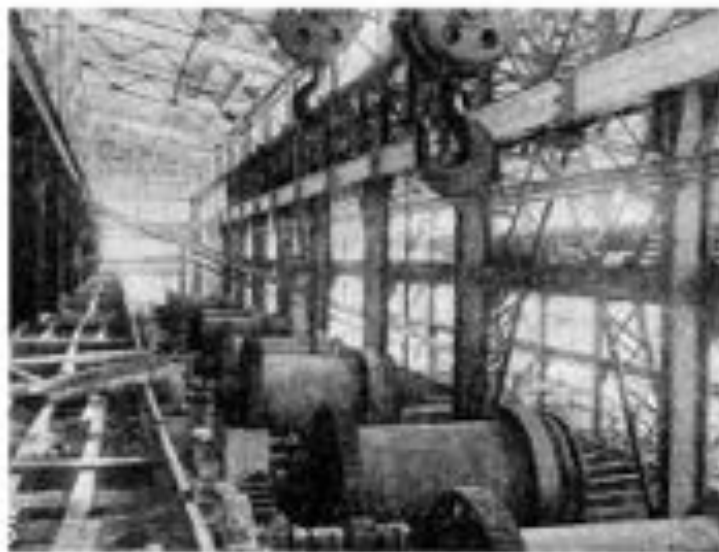
AUGER



B.O./ BAD ORDER



BAIL



BALL MILL



BAR



BARRING DOWN



BASKET



BAT WING SET

MISSOURI STATE CODE OF WIRE BELL
— SIGNALS —

1. BELL STROKES INDICATED BY A BOTTLE
POINT SIGNAL.

2. BELL'S LOWER

3. 1. FIRST MEN, BY BELL NAME SIGNAL,
2. 2. LOWER MEN, WIRE BUNDS

4. RELEASE SIGNAL, SIGN OF BUCKET

5. RELEASE SIGNAL OR SIGN OF BUCKET

6. BELL STROKES INDICATED BY A BOTTLE
INDICATED TO ACCEPT IF HE MUST, ADVISABLE BY
INDICATE BUNDS OR SIGN A FOR TEST THIS LANDING
IF WORK AFTER ACCEPTING THIS SIGNAL, SIGNAL
MUST BE PREPARED TO SIGN WITH SIGN THIS BELL
OR SIGN BY SIGNAL, BELL IN STATION AND BELL
MUST BE SIGN, BELL IN THE MOUNTAIN.

7. BELL'S SIGN ON ON

8. LOWER SIGNAL, FOLLOWED BY
STATION SIGNAL, BELL CALL TO SIGN BUNDS.
THIS SIGNAL MUST BE INDICATED FROM ALL STATION
BUNDS OR SIGNALS BELLING SIGNAL.

— STATION SIGNALS —

1. BELL STATION OF WIRE

1-4	1-5	1-6	1-7	1-8	1-9	1-10	1-11	1-12	1-13	1-14	1-15	1-16	1-17	1-18	1-19	1-20	1-21	1-22	1-23	1-24	1-25	1-26	1-27	1-28	1-29	1-30			
1-1	1-2	1-3	1-4	1-5	1-6	1-7	1-8	1-9	1-10	1-11	1-12	1-13	1-14	1-15	1-16	1-17	1-18	1-19	1-20	1-21	1-22	1-23	1-24	1-25	1-26	1-27	1-28	1-29	1-30

NOTES: SIGNALS MUST BE INDICATED BY BOTTLE OR
LANDING SIGNAL, THE SIGNALS SHALL NOT BE A
ONE SIGN OF BUCKET UNLESS IN UNDERSTANDING THE
SIGNAL AND SIGN OF THIS SIGNAL, THE SIGNAL BE
INDICATED BY BELLING FROM ONE AT LAST STATION
AND ONE BELLING THE SIGNAL.

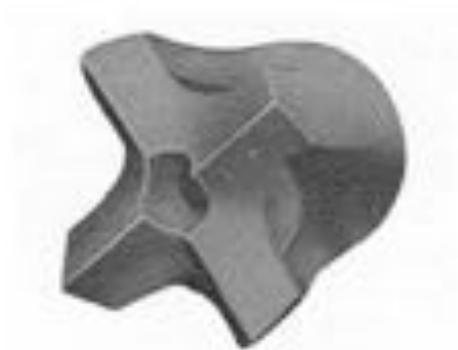
BELL CHART



BELL



BENCH (MULTIPLE)



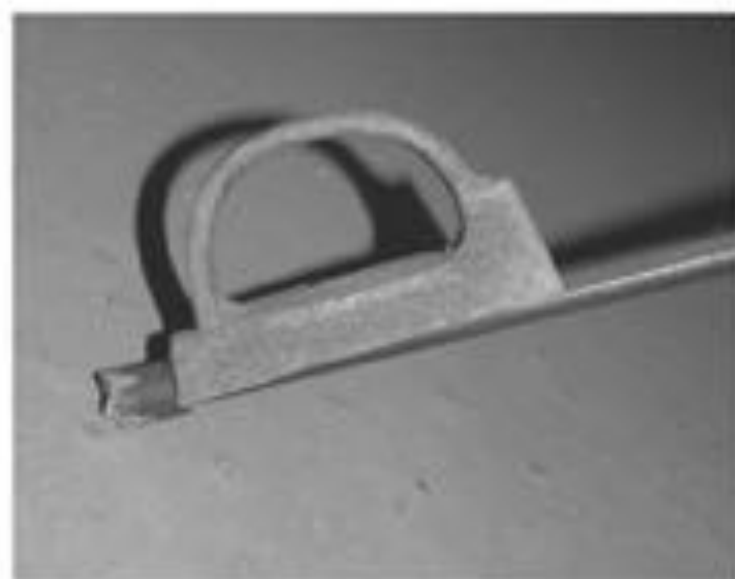
BIT



BIT BOX



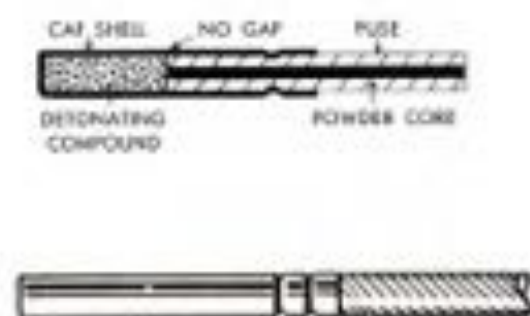
BIT HAMMER



BIT KNOCKER



BLAST HOLE



BLASTING CAP



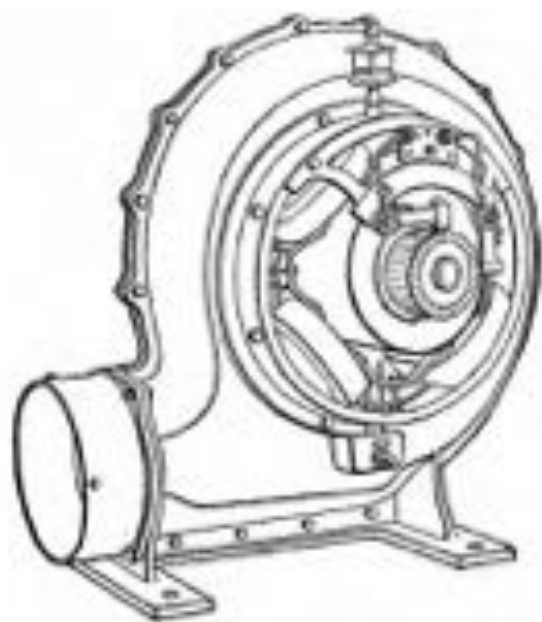
BLASTING MACHINE



BLOCK (SLUSHER)



BLOCK LIGHT



BLOWER



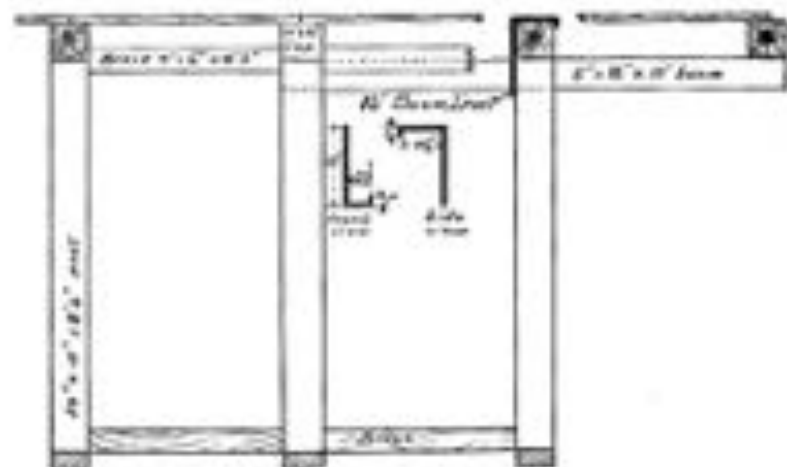
BLOW PIPE



BONNET

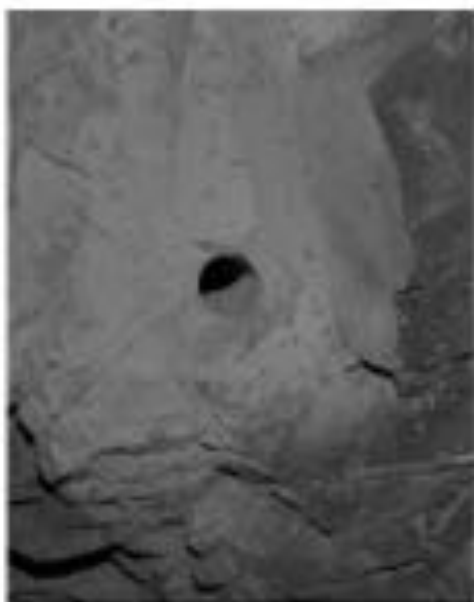


BOOM





BOOM HANGER



BOOT LEG



BOULDER HOOK



BOSS'S BIKE



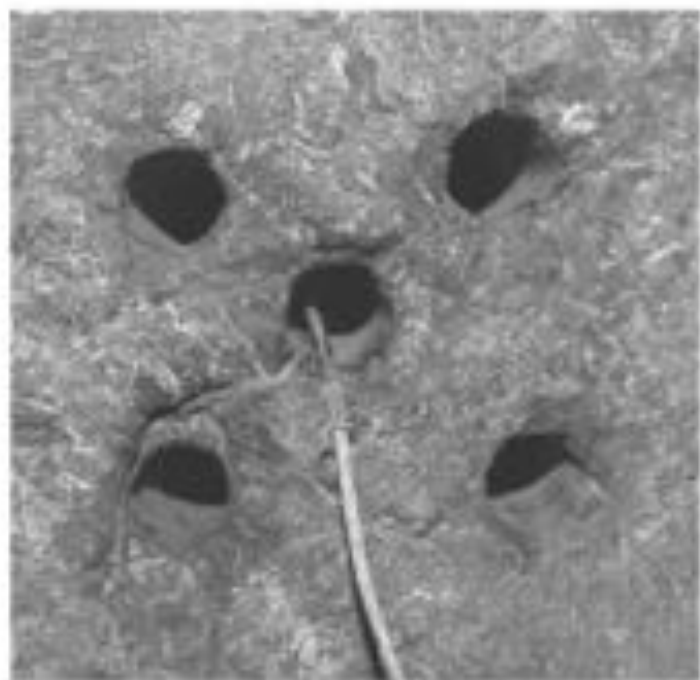
BRIDGE



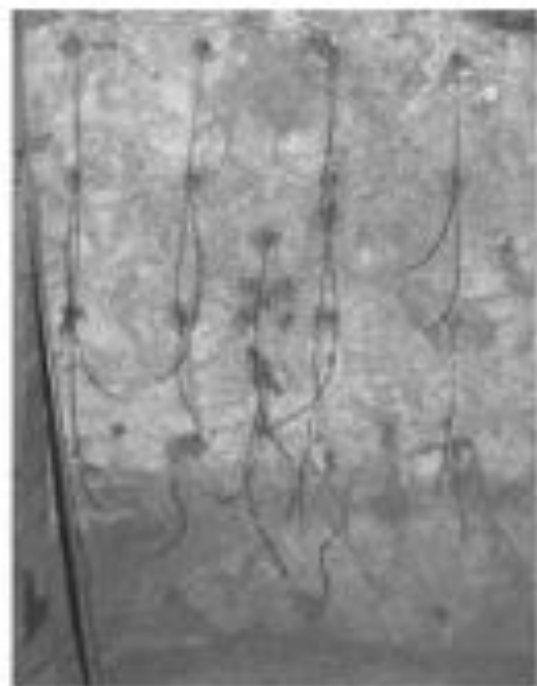
BUCKET (SHOVEL)



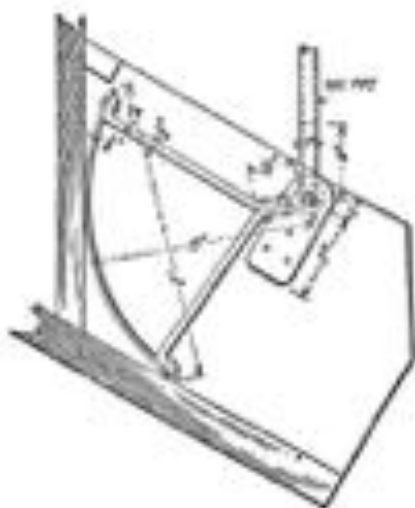
BULKHEAD



BURN



BURN CUT



C&A CHUTE



CABLE



CABLE SOCKET*



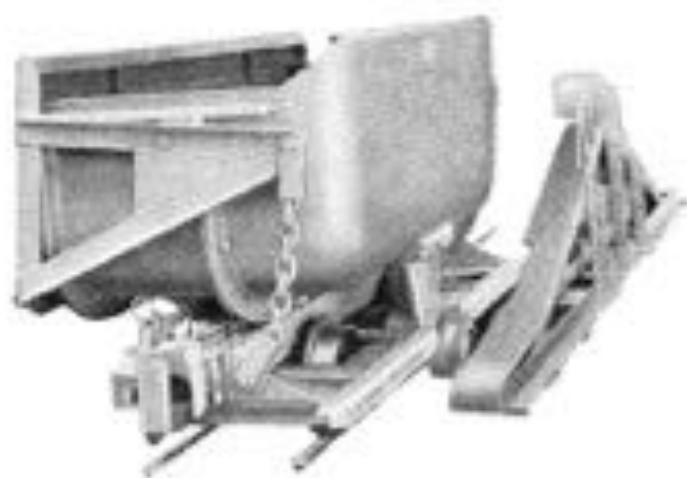
CAGE (S)



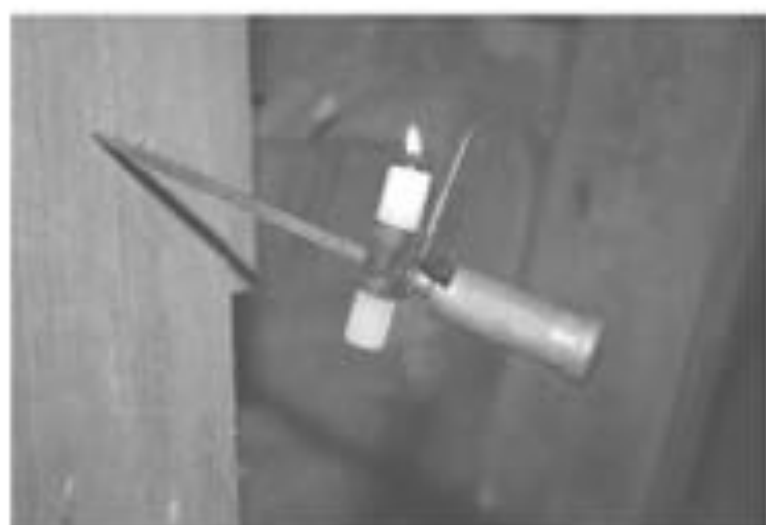
CAGE BAR AND CAGE GATES



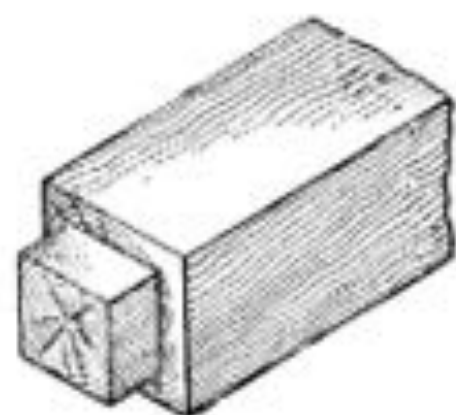
CALL BELL



CAMELBACK*



CANDLESTICK



CAP



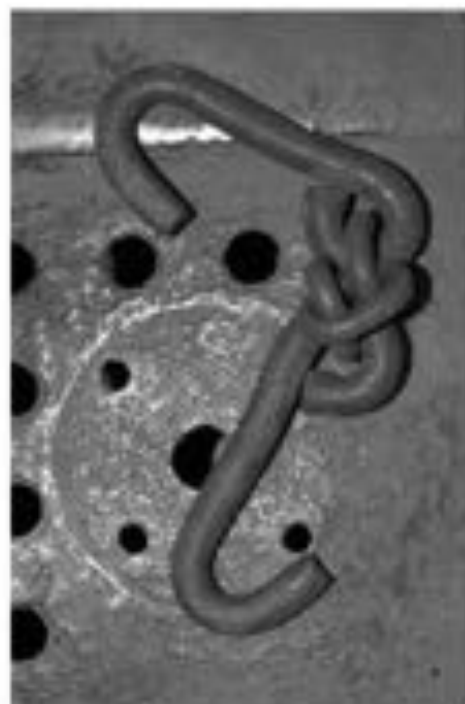
CAP CRIMPER



CAP LAMP



**CAR (s)
(STYLE "H")**



CAR CHAIN



CARBAMITE*



CARBIDE BIT*



CARBIDE LAMP



CAT



CATCH UP GROUND



CAVE



CAVE IN



CAVING GROUND



CHANGE HOUSE



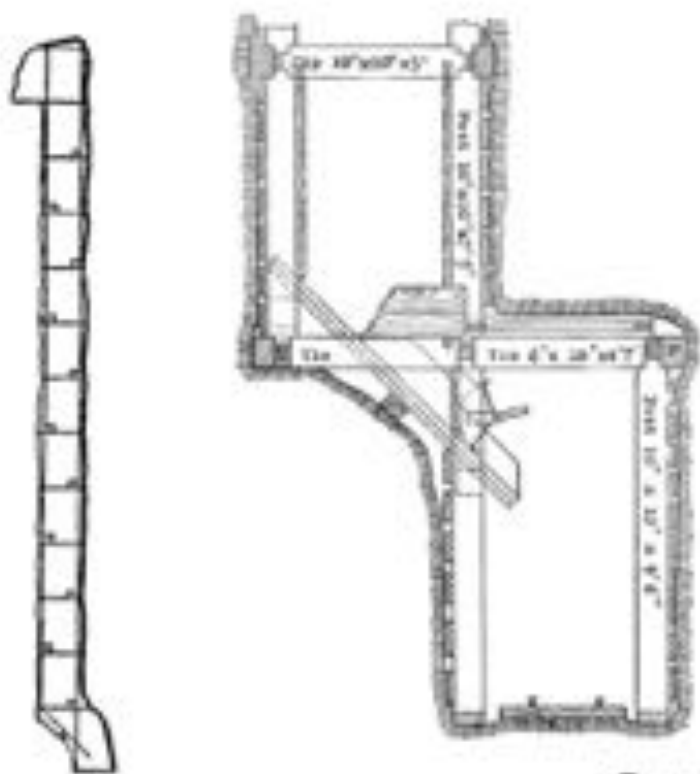
CHINK



CHUCK



CHURN DRILL



CHUTE





CHUTE BAR



**CHUTE DOOR
(COPPER QUEEN STYLE, LOOSE)**



**CHUTE DOOR HANDLE
(VERDE STYLE)**



CHUTE STAND



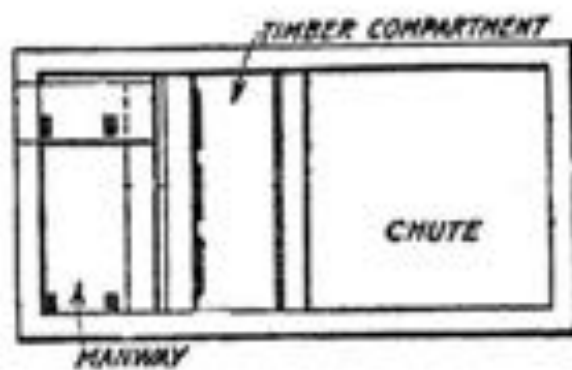
CODE OF SAFE PRACTICE



COLLAR BRACE



COLUMN



**COMPARTMENT (S)
(RAISE)**



CONCENTRATOR



CRIBBED RAISE



**COPPER QUEEN BRANCH
(C.Q.B.)**



DAYLIGHTED



DIAMOND DRILL



DIGGERS



DINKEY HOIST



**DIVISION
(#1)**



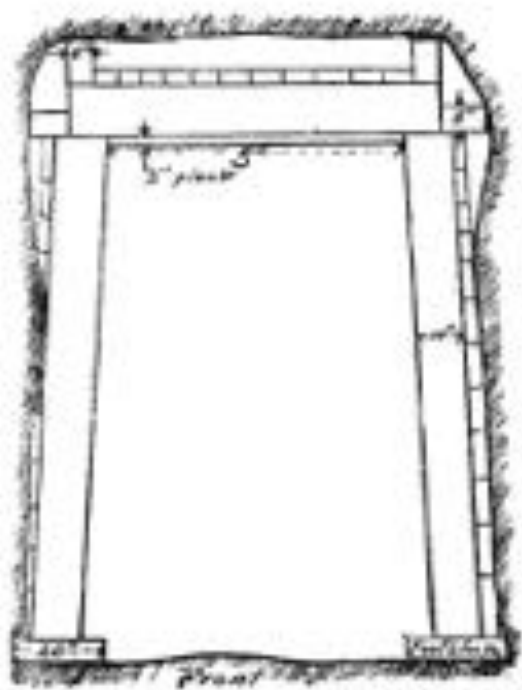
DOGHOUSE



DOGS



DOUBLE JACK



DRIFT SET



DRIFTER



DUMMY HOLE



DUMP

DUMP



EDISON LAMP*



ENCLOSED HEADFRAME



END DUMP



ESCAPEWAY



EYEBOLT



EYE SHIELD



FACE



FALL OF GROUND



FINALY STEP



FIRE DOOR



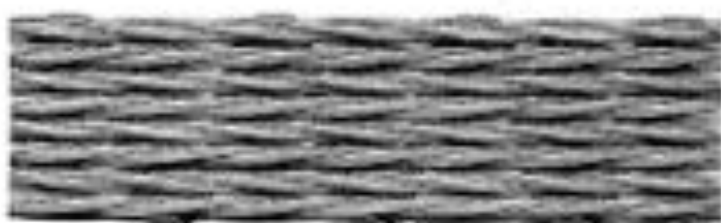
FIRE FUSE*



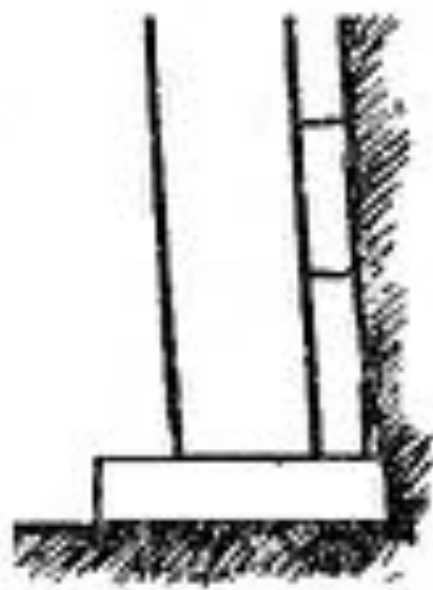
FISH PLATE



FLANGE



FLAT ROPE



FOOTBOARD



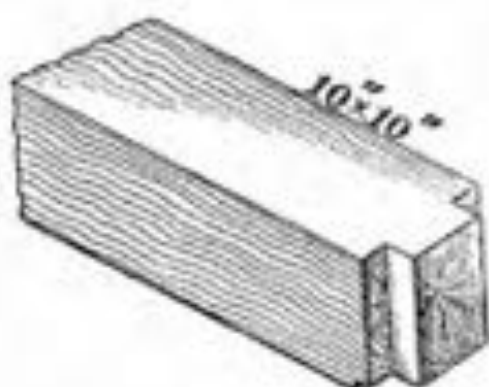
FROG



FUSE CAN



GIN POLE



GIRT



GLORY HOLE



GO DEVIL



GOB WALL



GOB FENCE (S)



GRIZZLEY



GUARD RAIL



**GUIDES
(ONE HIDDEN)**



HAND STEEL



HARD BOILED



HAUL ROAD



HEADFRAME



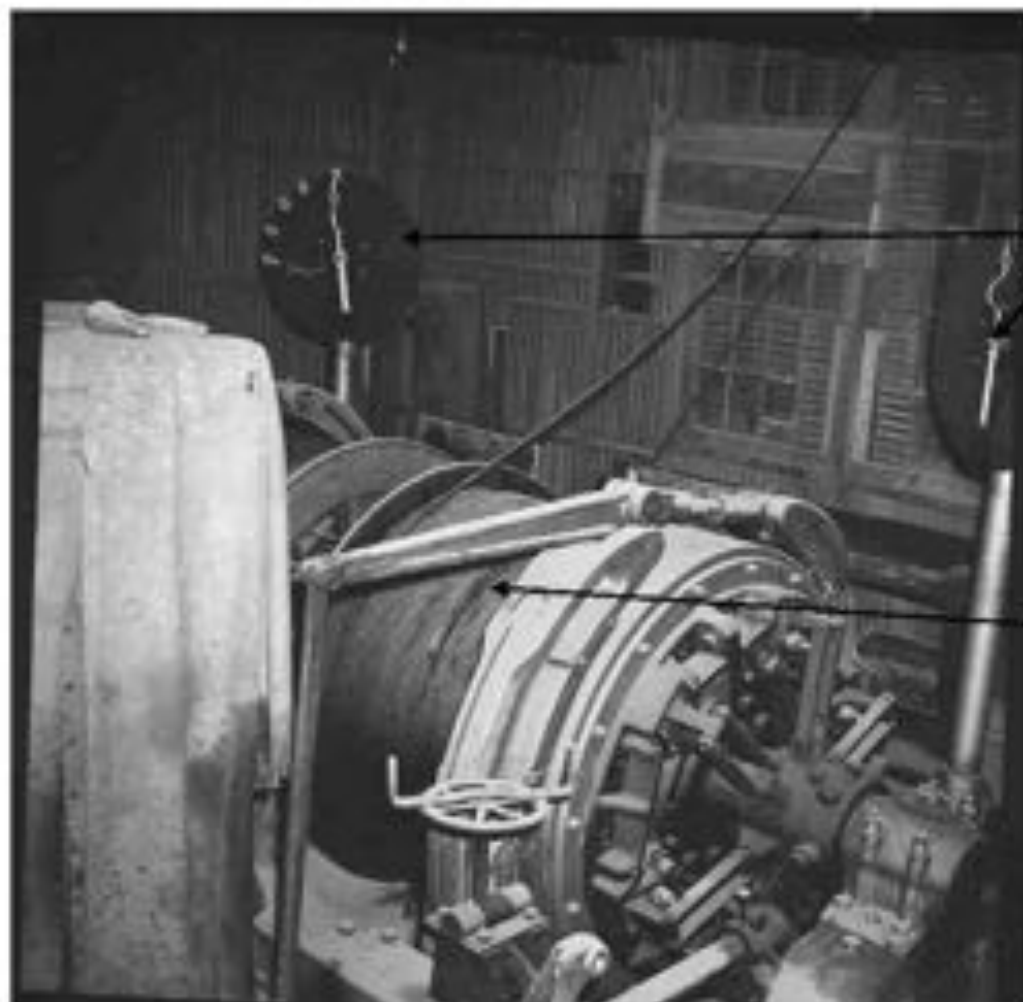
HEAVY GROUND



HELMET CREW



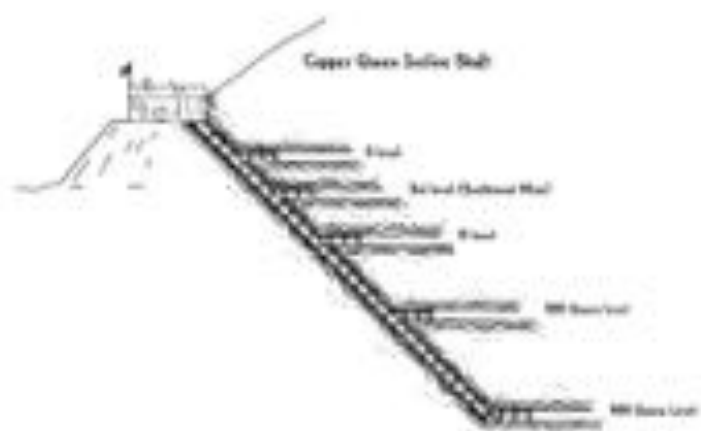
HITCH



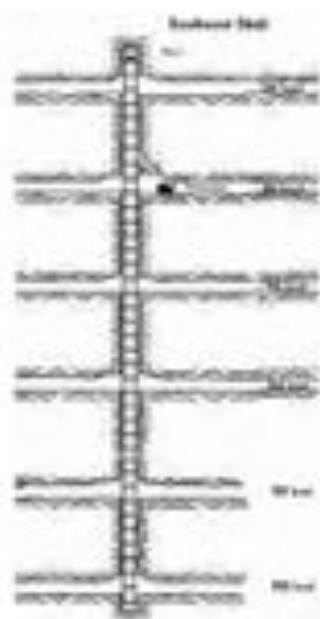
**HOIST DRUM
INDICATOR(S)**

HOIST DRUM

HOIST



INCLINED SHAFT



INTERIOR SHAFT



JACK LEG



JIM CROW



KICKED OUT



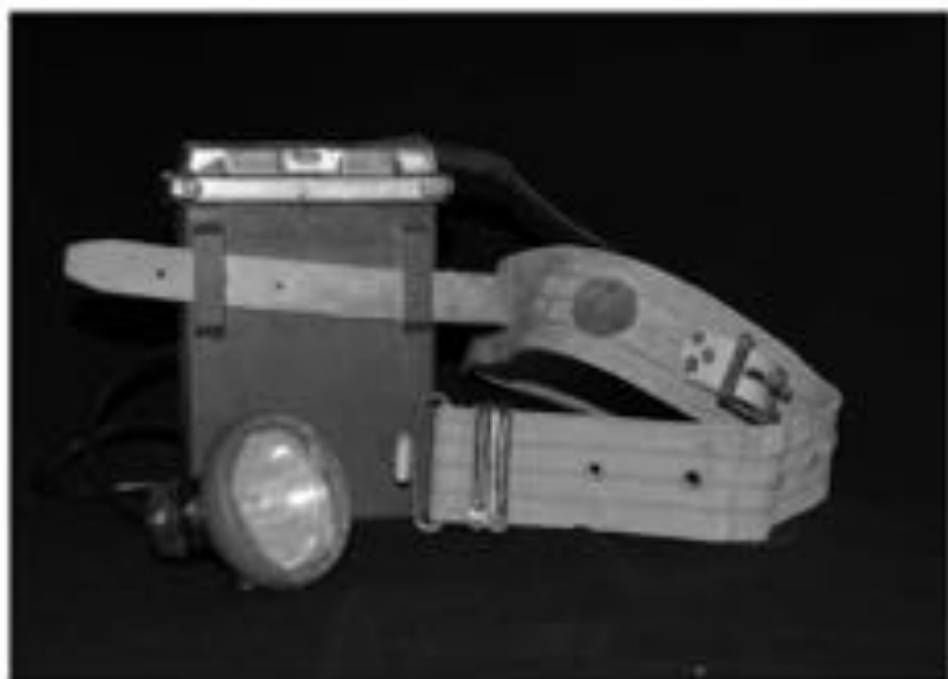
LADDER HANGER



LAGGED OFF



LAGGING



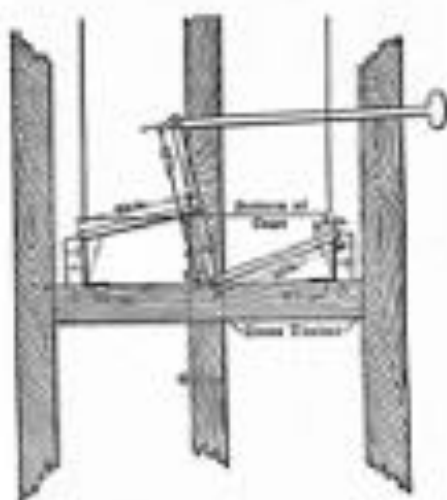
LAMP BELT



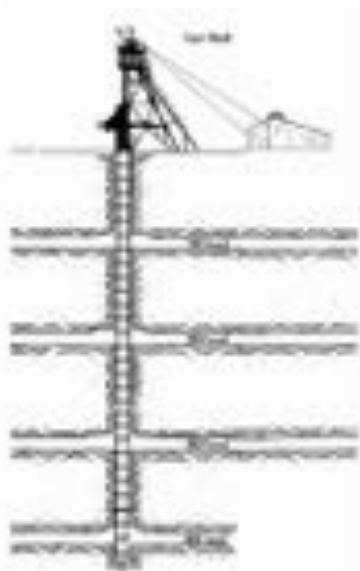
LAMP RACK



**LANDING
(MANWAY)**



LANDING CHAIR



LEVEL (s)



**LOADING
BOARD**

LOADING BOARD



LOADING STICK



MAN CAR



MAN TAG(S)



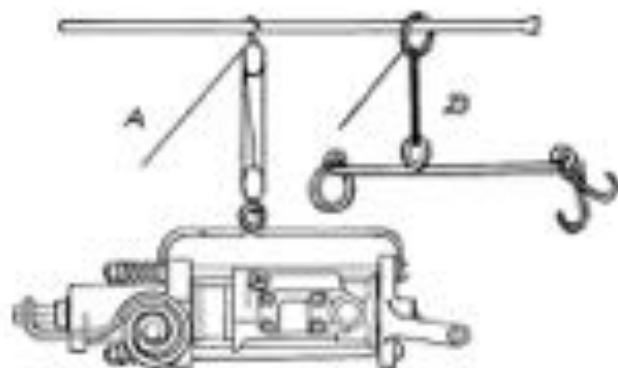
MANCHA MOTOR



MANWAY



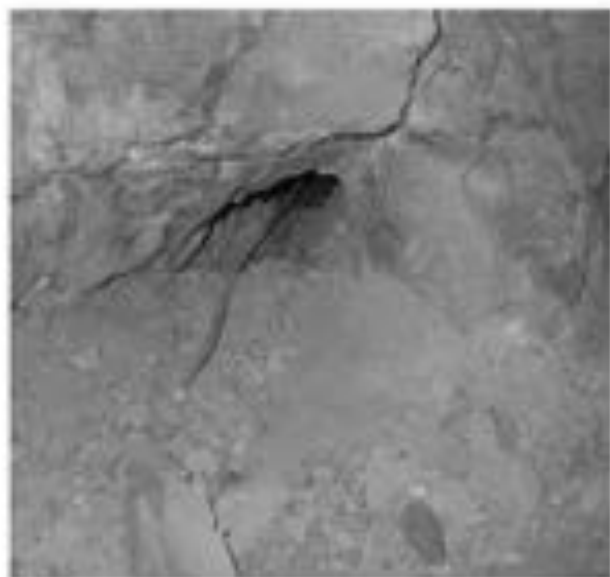
MATCH SAFE



MEXICAN SETUP



MINE PHONE



MISSED HOLE



MOTOR



MOTOR BELL



MOTOR SANDERS



MOTOR STEP



MUCK TRUCK



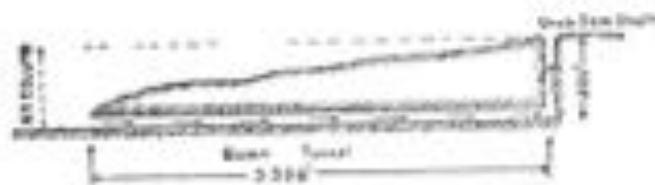
MUCKING MACHINE



MULE BARN



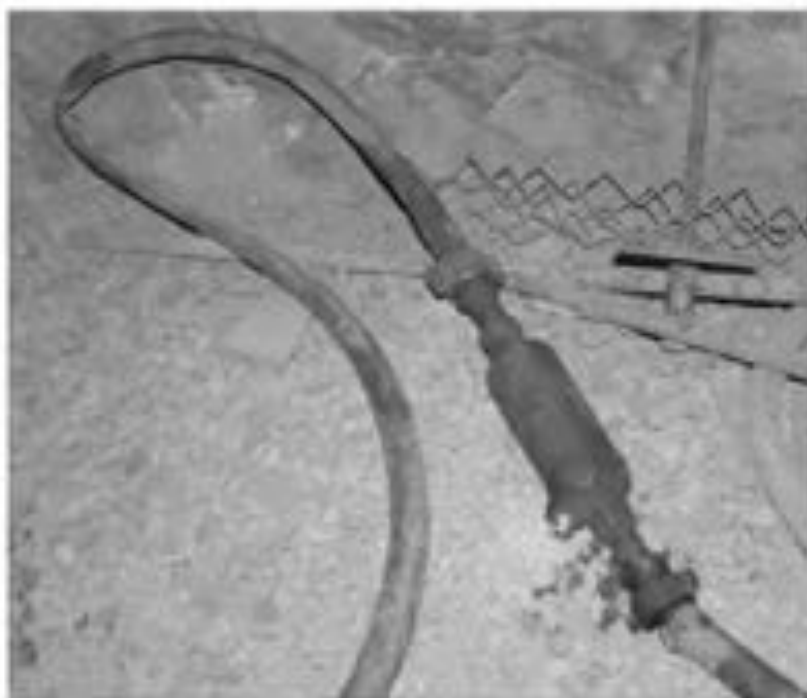
NAIL BAG(S)



NATURAL VENTILATION



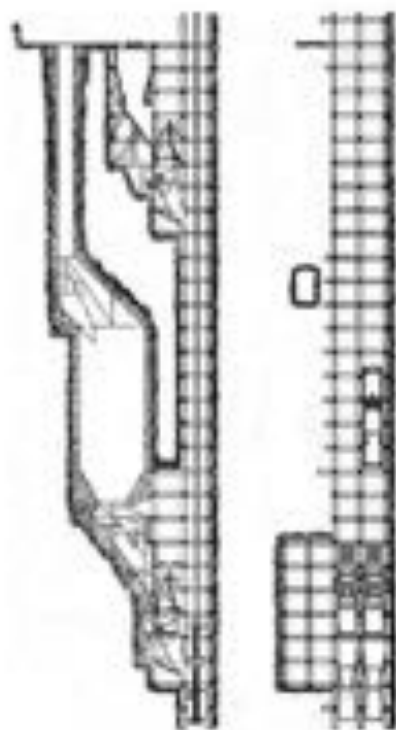
NO ROAD



OIL BOTTLE



ORE BIN



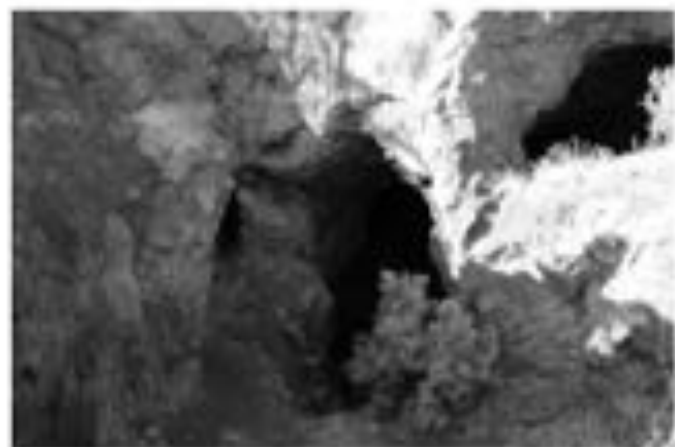
ORE PASS



PIE CAN



PIG TAIL (s)



PILLAR



PIPE AND TRACK CAR



PLUGGER



PORTAL



POST



POWDER BOX (ES)



POWDER CAR



**POWDER MAGAZINE
(ABANDONED)**



POWER PLANT



PRECIPITATION PLANT



PUMP STATION



PUP MOTOR



RADIO BELL(s)



RAIL PUNCH



RAW CROSSCUT



ROCKER DUMP



SADDLE



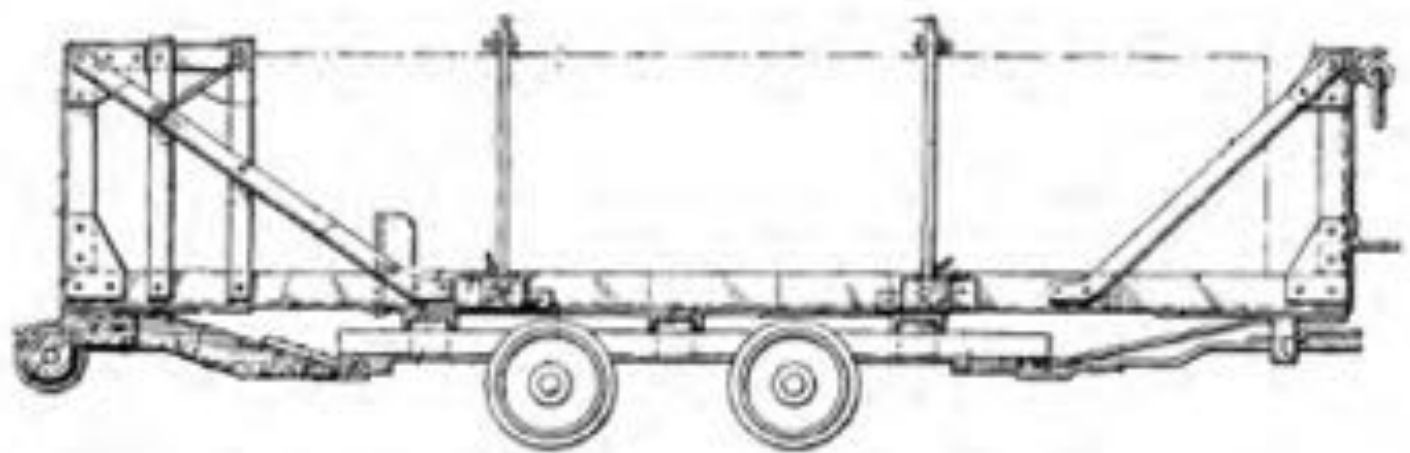
SAFETY CHAIN



SAMPLE HAMMER



SCONCE



SCOTT TRUCK



SECTIONAL SET (s)



SELF RESCUER



SHAFT BELL

SHAFT BELL



SHAFT GATE (s)



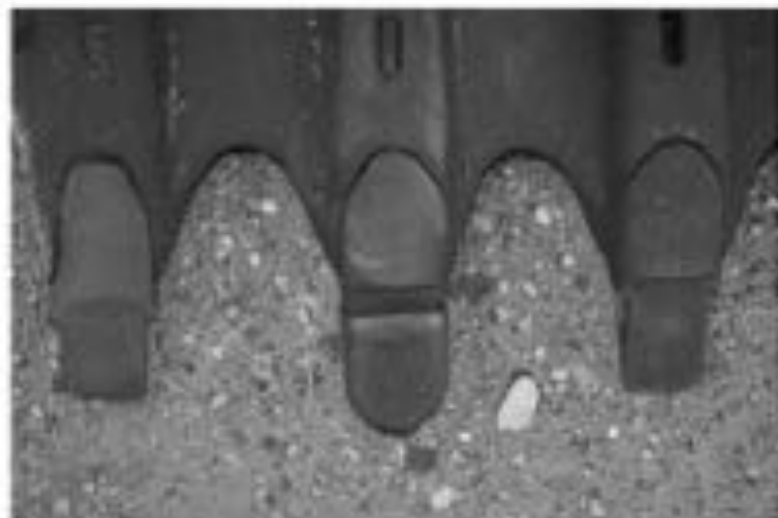
SHANK



SHEAVE WHEEL(s)



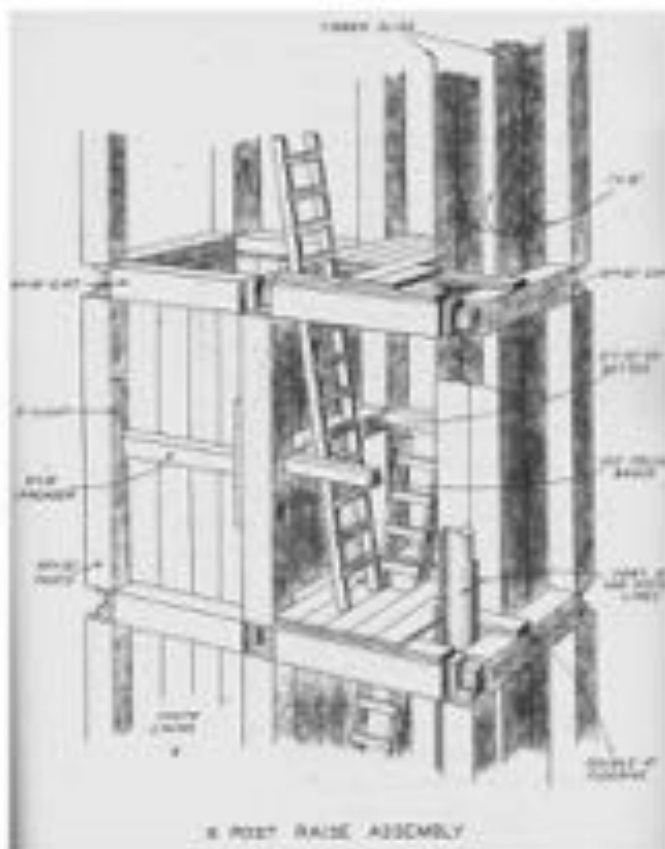
SHOVEL



SHOVEL TEETH



SINKING BUCKET



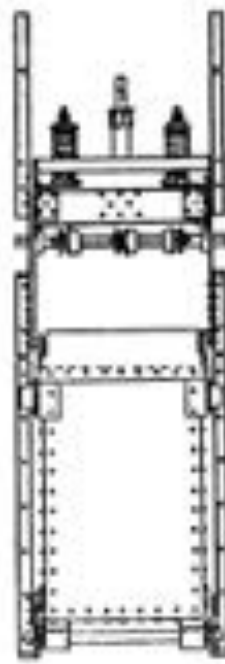
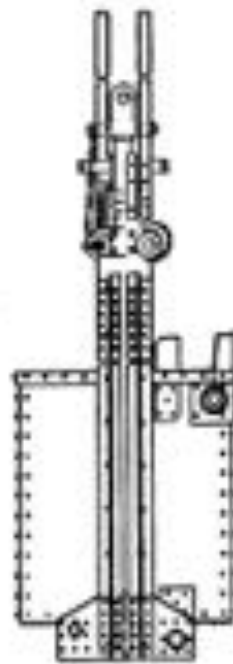
SIX POST



SKEWER



SKIN TO SKIN



SKIP



SLAB



SLING



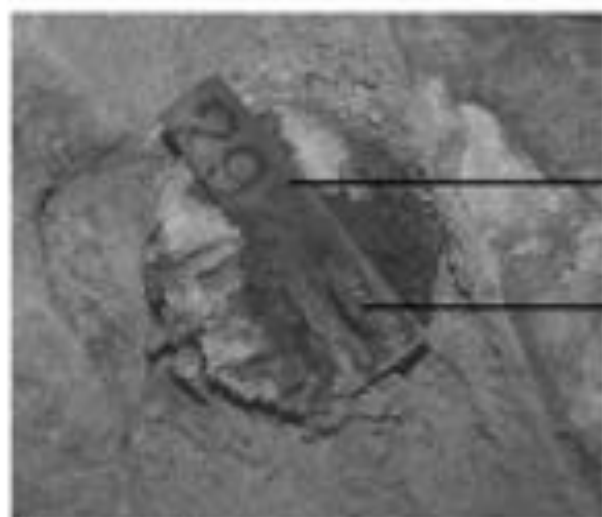
SLUSHER



SLUSHER BUCKET



SLUSHER RAKE



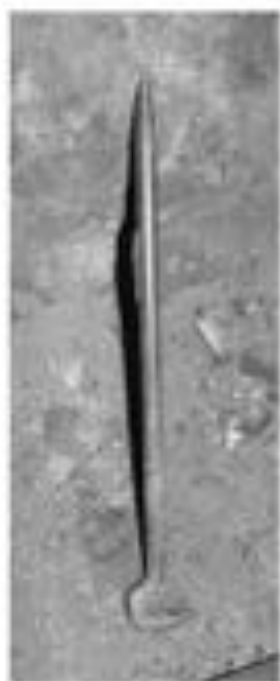
SURVEY SPAD

SURVEY TAG

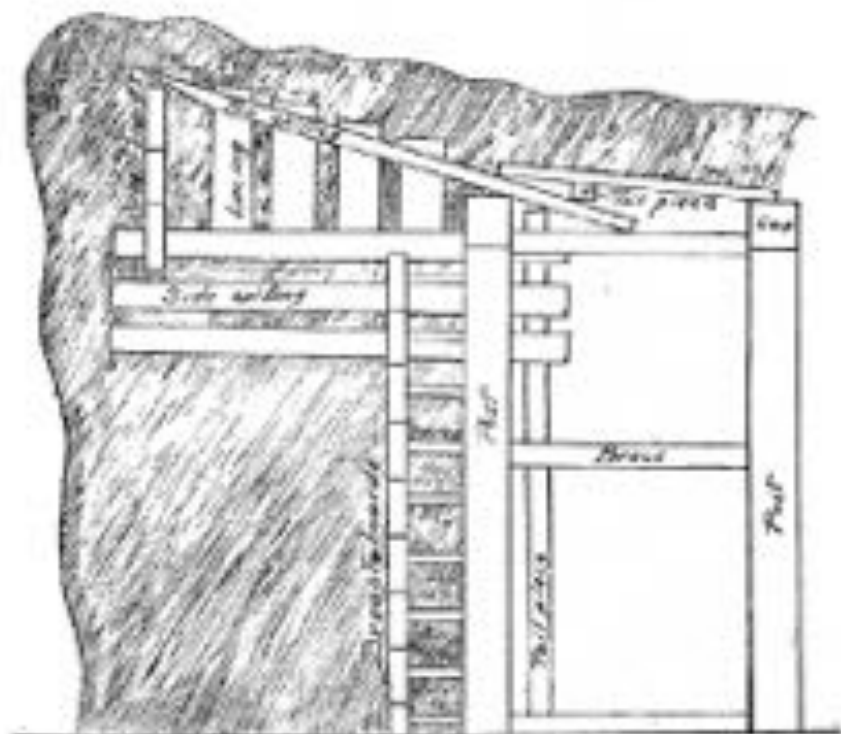
SURVEY SPAD



SPIKE



SPIKE PULLER



SPILING



SPITTER(s)



SPITTER BOARD



SPITTER CAN



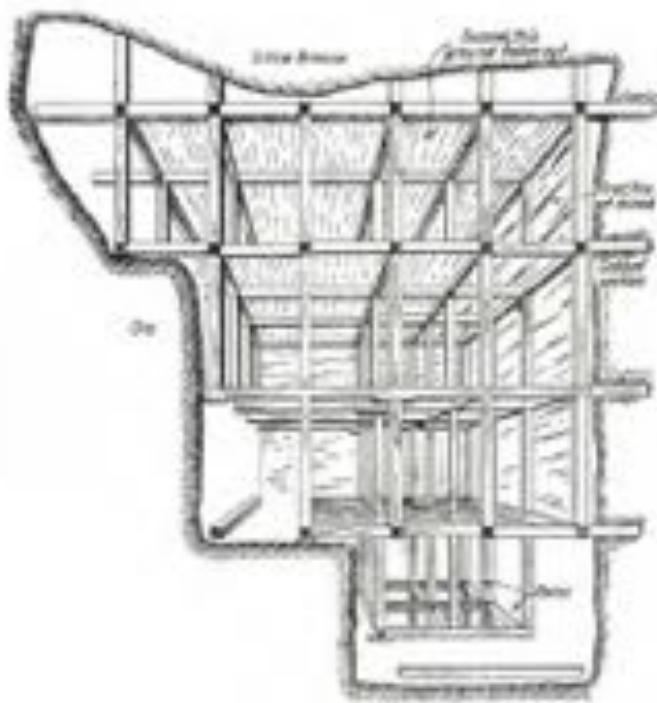
**SPOON
(END ONLY)**



SPREADER



SPREADER SCAB (S)



SQUARESET STOPING



STULL



SWITCH



SWITCH POINT(S)



SUBSIDENCE CRACKS



SWITCH THROW



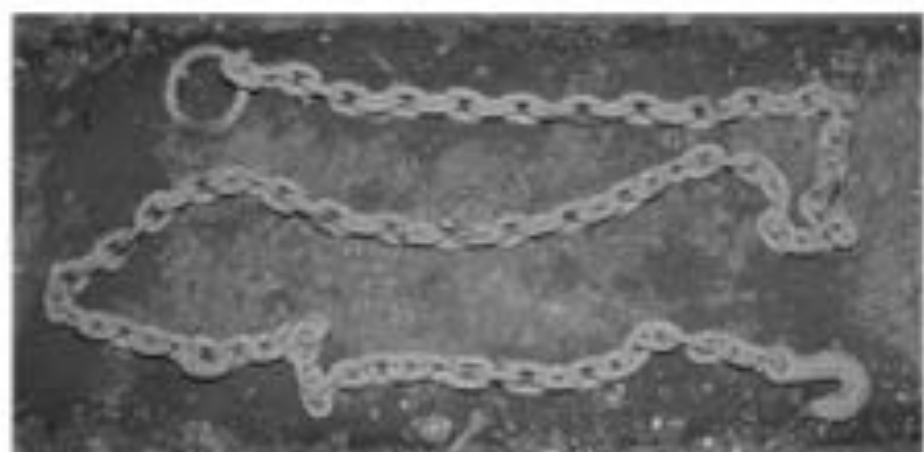
T STALL



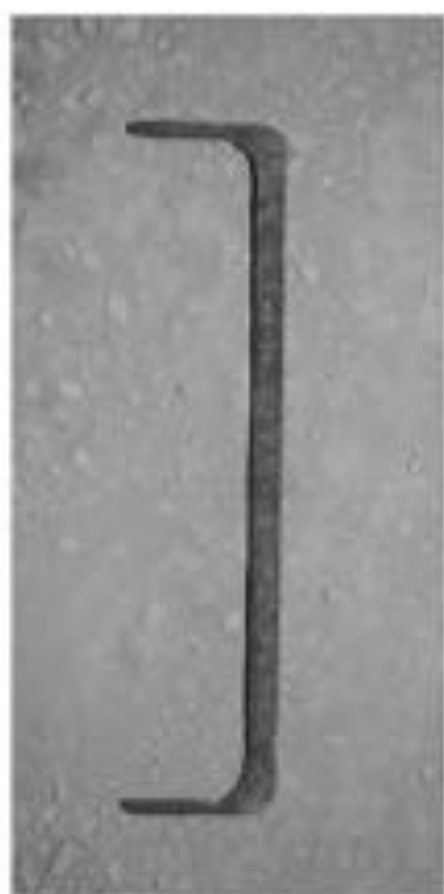
TAIL LIGHT



TIE(S)



TIMBER CHAIN



TIMBER DOG



TIMBER JACK



TIMBER SAW



TIMBER STATION



TIMBER TRUCK(S)



TIMBER YARD



TOILET CAR



TOOL CAR



TRACK BOLT*



TROLLEY



TROLLEY HANGER



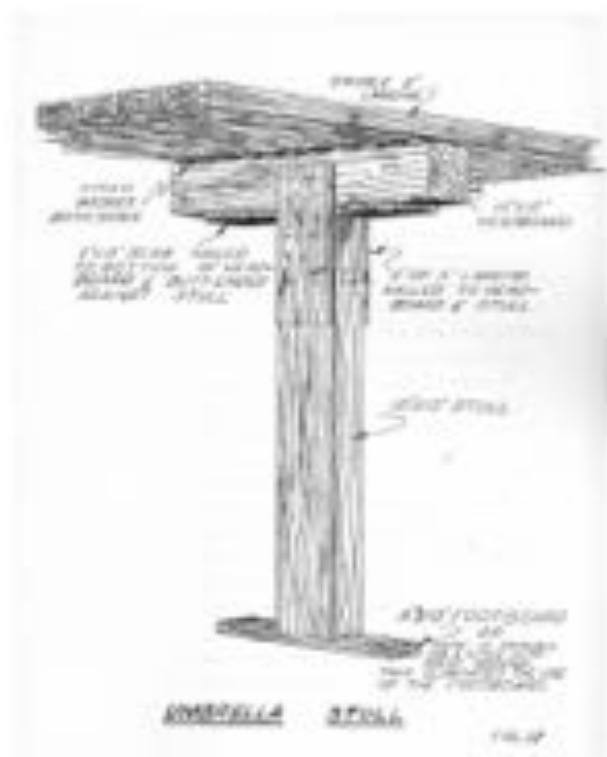
TROLLEY POLE



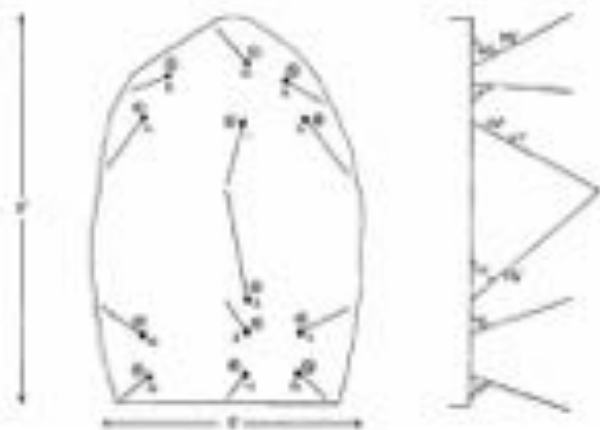
TRUCKS



TUGGER



UMBRELLA STULL



V CUT



VENT PIPE



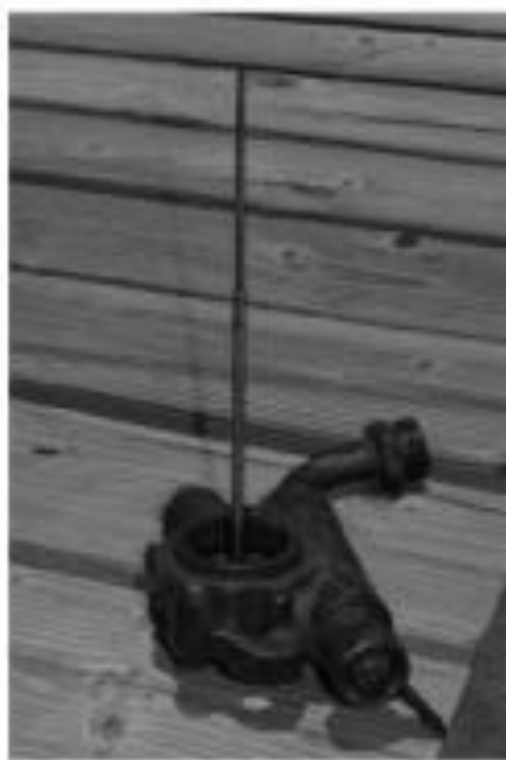
VERDE CHUTE



WATER DITCH



WATER HOSE



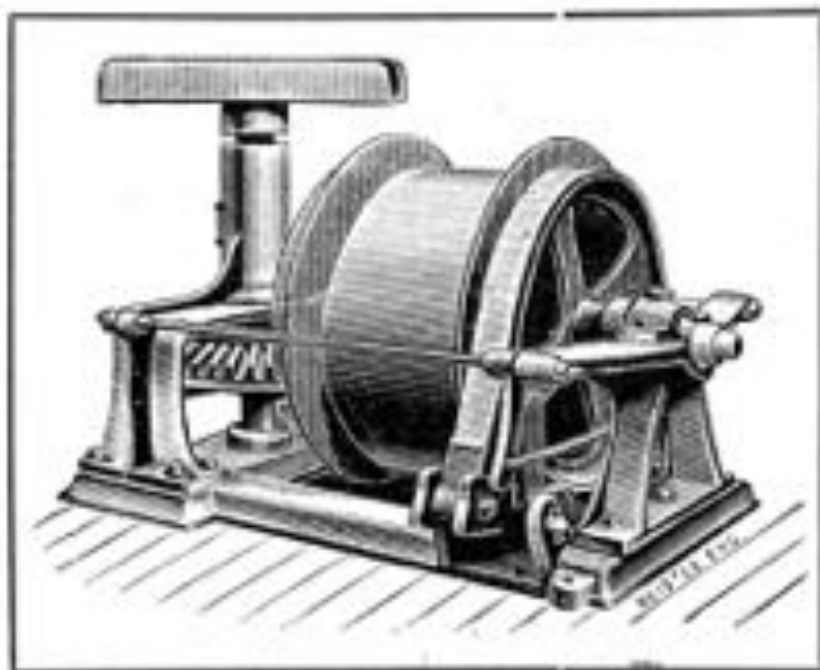
WATER NEEDLE



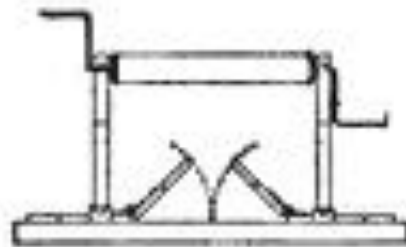
WEDGE



WHEAT LAMP



WHIM



WINDLASS